

MONTHLY MEMBERSHIP PROGRESS REPORT

District 3233E1

Results as of: 6/30/2024

GMT:

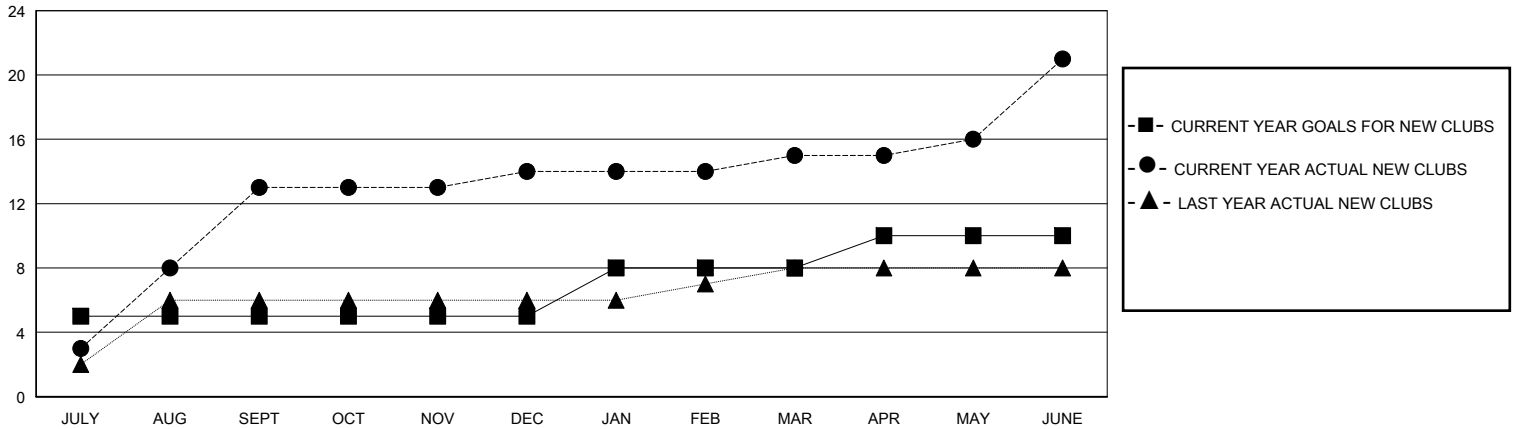
LOCATION INDIA

GMT CA

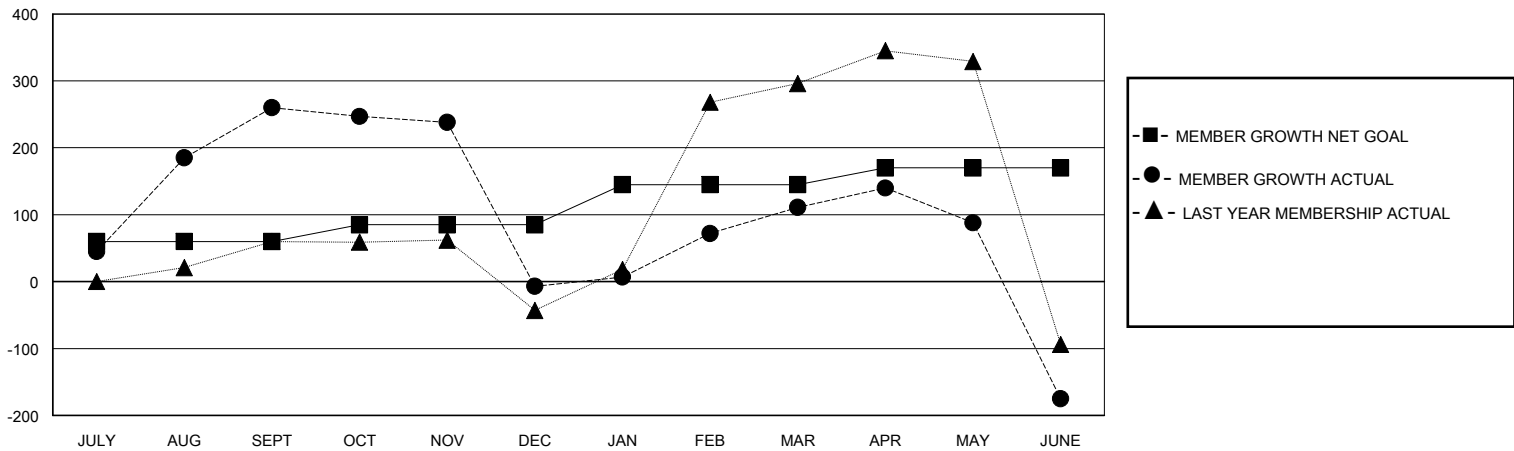
Clubs			
RESULTS FOR 2023-2024			
QUARTER	NEW CLUB GOAL	NEW CLUBS	DROPPED CLUBS
JULY/AUG/SEPT	5	13	1
OCT/NOV/DEC	0	1	8
JAN/FEB/MAR	3	1	1
APR/MAY/JUNE	2	6	1

Members			
RESULTS FOR 2023-2024			
QUARTER	MEMBER GROWTH NET GOAL	MEMBER GROWTH ACTUAL	DROPPED MEMBERS ACTUAL (including transfers)
JULY/AUG/SEPT	60	429	159
OCT/NOV/DEC	25	87	348
JAN/FEB/MAR	60	261	98
APR/MAY/JUNE	25	351	569

GOALS AND ACTUAL NEW CLUBS CUMULATIVE



GOALS AND ACTUAL MEMBERS CUMULATIVE



DROPPED CLUBS: 11	133 CLUBS OF 225 ADDED 1 OR MORE NEW MEMBERS	GENDER DISTRIBUTION	
		MALE 4,132 (73.33%)	FEMALE 1,502 (26.65%)
DROPPED MEMBERS		CLICK HERE FOR CUMULATIVE MEMBERSHIP DATA	TOTAL FAMILY UNIT MEMBERS 1,638
DECEASED 12	CLUB CANCELLED 163		FAMILY MEMBERS PAYING HALF DUES 973
OTHER 993	TOTAL 1,168		